

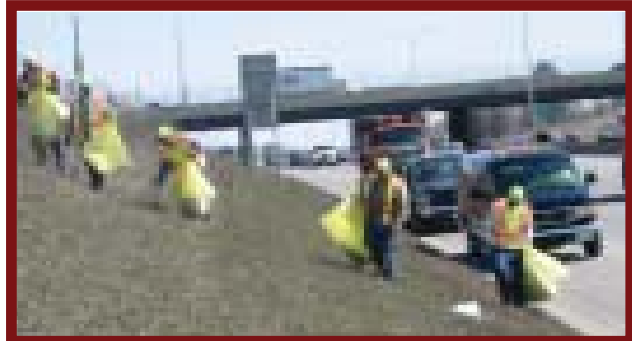
Institution/Community Work Crew (ICWC) Program

Background

- ✓ The Institution/Community Work Crew (ICWC) Program began in the spring of 1995 with one group of minimum-custody inmates. The program's structure and philosophy were modeled after the Minnesota Department of Corrections' (DOC) Sentencing to Service (STS) program, which had already established an excellent track record of working in the community. Now, carefully-screened prison inmates are being placed in the same type of structured, supervised work setting that has proven so successful for STS.
- ✓ Carefully selected, non-dangerous, minimum-security inmates work on crews under the supervision of a qualified DOC crew leader. The program goal is to teach social and work skills while communities accomplish projects. Offenders are housed in minimum-security units when not working.
- ✓ ICWC members are paid up to \$1.50 per hour for their labor, from which they must pay family support, restitution, and into a fund for victims.
- ✓ Community partnerships have been established through contracts with various city governments, park departments, non-profit environmental groups, and public facilities to offset the cost of the program.

Benefits

- ✓ Bringing offenders and the community together through mutually beneficial partnerships.
- ✓ Organized, supervised work crews establish positive work ethics.
- ✓ Working on constructive community projects fosters responsible behavior patterns.
- ✓ Restitution and rehabilitation, not retribution.
- ✓ Program cost to taxpayers is minimal. Those who benefit pay for the cost of the program.
- ✓ Offenders receive skill-building opportunities; communities get an economic, sustainable workforce.
- ✓ Appropriate utilization of an available, untapped workforce.
- ✓ Offenders begin focusing on job skills and possible job markets.



Removing trash from roadsides

Projects Completed

- ✓ Construction and demolition
- ✓ Trail and waterway development
- ✓ Flood and storm damage control
- ✓ Forestry work, including fire clean-up and containment crews
- ✓ Golf course and building maintenance
- ✓ Land restoration
- ✓ Highway/interstate clean-up

For Additional Information

Contact Mark Siemers, ICWC Supervisor, 1450 Energy Park Drive, Suite 200, St. Paul, Minnesota 55108-5219, phone 651/361-7124, email mark.siemers@state.mn.us, TTY 800/627-3529.



Cleaning up after summer storms