


Data
Definition
Team



Minnesota
Statewide Probation
&
Supervised Release
Outcomes

Annual Report
2009
2005 Closed Data

Acknowledgements

The members of the Data Definition Team gratefully acknowledge the assistance and guidance received from both county and state employees. At the heart of this statewide effort is a dedication to making Minnesota a safer place, improving correctional cost efficiency by providing sound information to assist policymakers, establishing effective strategies for quality programming and service delivery, and holding service providers accountable. This effort represents a true collaboration between the state and the counties and would not have been possible without the expertise of many people in both the DOC and county corrections offices. Specifically, the Data Definition Team would like to thank the state and county staff who worked diligently to obtain the Statewide Identification Numbers needed to determine the recidivism rates provided in this report. In addition, the information used to complete this work would not have been available without the many people who work daily to keep up-to-date, accurate and accessible offender records.

The Data Definition Team members:

Mark Sizer*	Chair – Stearns County
Jennifer Johnson*	Research Analyst – MN Department of Corrections
Tom Adkins	Washington County
James Ahrens	Hennepin County
Meg Grove	Dakota County
Barb Illsley	Dakota County
Deb Kerschner	MN Department of Corrections
Paul Schroeder	Ramsey County
Nancy Skilling	Hennepin County
Vickie Tholkes	MN Department of Corrections
Evonn Westcott	Brown County

Thank you all for your professionalism, expertise, dedication and hard work.

*For questions please contact Mark Sizer at (320-656-6404) mark.sizer@co.stearns.mn.us or Jennifer Johnson at (651-361-7119) Jennifer.E.Johnson@state.mn.us.

Table of Contents

Executive Summary	4
Introduction	5
Statewide Probation and Supervised Release Outcome Measures for Cases Closed in 2005	9
FIGURE 1: Breakdown of Age	9
FIGURE 2: Breakdown of Gender	10
FIGURE 3: Breakdown of Race	10
FIGURE 4: Percentage of Offenders who Remained Felony-Free 2005	11
FIGURE 5: Five Year Comparison of Probation	12
FIGURE 6: Five Year Comparison of Supervised Release	12
Regional Breakdown for Cases Closed in 2005	13
Regional Map	14
Probation Regional Recidivism	15
FIGURE 7: Probation Population Distribution	15
FIGURE 8: Six Months Felony-Free Rates for Probation	16
FIGURE 9: One Year Felony-Free Rates for Probation	17
FIGURE 10: Two Years Felony-Free Rates for Probation	18
FIGURE 11: Three Years Felony-Free Rates for Probation	19
Supervised Release Regional Recidivism	20
FIGURE 12: Supervised Release Population Distribution	20
FIGURE 13: Six Months Felony-Free Rates for Supervised Release	21
FIGURE 14: One Year Felony-Free Rates for Supervised Release	22
FIGURE 15: Two Years Felony-Free Rates for Supervised Release	23
FIGURE 16: Three Years Felony-Free Rates for Supervised Release	24
Detailed Regional Outcomes for Cases Closed in 2005	25
FIGURE 17: Northwest Region	25
FIGURE 18: North Central Region	25
FIGURE 19: Northeast Region	26
FIGURE 20: West Central Region	26
FIGURE 21: Central Region	27
FIGURE 22: Mid-Minnesota Region	27
FIGURE 23: Upper Minnesota/East Central Region	28
FIGURE 24: Southwest Region	28
FIGURE 25: South Central Region	29
FIGURE 26: Southeast Region	29
FIGURE 27: Metropolitan Region	30
Restitution Ordered for Felony Cases Closed in 2008	31
Table 1: Number of Adult Felony Cases Closed in 2008 with Restitution Ordered	31
Table 2: Restitution Collected from Adult Felony Cases Closed in 2008	31
Table 3: Restitution Collected from Adult Felony Cases Closed from 2006--2008	31
Appendix	32
Appendix A: History	33
Appendix B: Data Dictionary	366

Executive Summary

This report is the latest result of an effort that has been continuing for the last decade. The Data Definition Team is a collaborative effort between state and local corrections jurisdictions. Since 1997, the Team has been working to develop and report uniform outcomes for probation and supervised release throughout Minnesota. This year the Data Definition Team produced two reports. This is the second report being done in 2009 and includes 2005 closed offenders. The first report published earlier this year reported on 2004 closed offenders. This report offers information on reconviction rates and restitution collections throughout Minnesota.

The three-year recidivism rates for probationers and supervised releasees who left supervision during 2005 is discussed in detail. Recidivism is defined as having a new felony conviction within three years of leaving supervision. This report only follows offenders who complete probation or supervised release without revocation. See the **Methodology** section on page five and six for a full discussion of definitions, limitations, and how the data was gathered. The body of this report includes felony-free rates for probationers and supervised releasees from six months, one year, two years, and three years after they leave supervision.

The findings of this report include:

- **85% of probationers statewide remained free of felony convictions for three years after leaving supervision in 2005**
- **70% of the offenders leaving supervised release in 2005 had no new felony convictions within three years.**
- **There was little variation in probation outcomes across the state.** There was a difference of 5% after three years between the regions with the highest and lowest rates.
- **There was greater regional difference in outcomes for supervised release clients.** After three years, there was a 15% difference between the regions of the state with the highest and lowest reconviction rates.

This report also includes statewide statistics on restitution. Restitution is defined as money the Court orders an offender to pay to a victim as part of a criminal sentence. This is an equitable remedy to restore a person to the position they would have been in if not for the improper action of the offender. Cases with restitution ordered as defined for this report include felony-level adult cases that were closed in 2008 with a case condition of restitution.

- **Statewide, there were 2,292 cases with a case condition of restitution closed in 2008.**
- **Statewide, the case condition of restitution was paid in full in almost 62% of the cases closed in 2008.**
- **Statewide, the total amount of court ordered restitution paid was \$5,236,558.53 in the cases closed in 2008.**

Introduction

The *Minnesota Statewide Probation and Supervised Release Outcomes Report* for 2009 describes three year, statewide¹ recidivism findings for adult felony offenders who had a closed supervision case in 2005. Through a concerted effort, a set of standardized outcome measures and definitions have been adopted by Minnesota's three probation delivery systems: Minnesota Association of County Probation Officers (MACPO), Minnesota Association of Community Corrections Act Counties (MACCAC), and the Department of Corrections (DOC). Using these definitions and Minnesota's Statewide Supervision System (S³), Minnesota is able to report statewide recidivism on felony offenders on probation and supervised release. The purposes of this effort are to improve public safety and correctional cost efficiency by providing sound information to assist policymakers, to establish effective strategies for quality programming and service delivery, and to hold service providers accountable.

History

The effort to report statewide probation and supervised release recidivism outcomes has been in existence since 1997. During these past years, the efforts and the ability to report statewide recidivism is continually moving forward. An in-depth view of the development and history of the Data Definition Team (DDT) is located in Appendix A.

Outcomes

As is to be expected, the outcome goals for a project of this magnitude are ever changing. As the work begins and the discovery of what data are available, reality becomes clearer on what can be accomplished. Therefore because of this, the outcome goals are not being reported in this year's report.

Methodology

To complete this report, the DDT defined the population of interest as felony-level offenders with a Minnesota offense and having a supervision case that closed in 2005 for any reason except death or incarceration in prison. For purposes of this report, recidivism was defined as a felony-level conviction within three years of an offender's supervision end date.

To obtain the population to be studied, researchers at the Department of Corrections used the Statewide Supervision System (S³) to extract adults and certified adults² with a felony-level supervision case ending in 2005. Each offender is only represented once. To ensure this, the felony case with the longest period of supervision was retained for offenders with multiple cases that closed in 2005, while the other cases were eliminated. There were a small number of offenders that were represented in more than one county. In these instances, the county where the offender was supervised for the longest length of time was retained. Because duplicates were not included, this may marginally affect regional numbers. It is important to note that these offenders, while having a felony supervision case that closed in 2005, could potentially have been under another form of supervision for a different case. Therefore, it would be inaccurate to assume that all of the offenders in this study were free from supervision during the three years after their felony case closed.

¹ Statewide includes all counties and probation agencies that supervise felony-level offenders. County probation offices that only handle juvenile and non-felony offenders are not included in this report.

² Adult and Certified Adult status was determined by selecting only those cases with an age status of "A" for adult (over 18) or "C" certified adult (a juvenile certified by the court to stand trial as an adult).

Offenders who were closed for reasons of death and incarceration into prison were excluded. If they were not in the community they did not have a chance to remain recidivism-free. Transfers who were transferred from agency to agency were a bit of a problem. An offender who leaves one agency to go to a different one within Minnesota will remain open in the transferring district until that offender is done with supervision. Therefore, an offender has the possibility of being “open” in several agencies during the same timeframe, and likewise being closed out at the same time in several agencies. The data were limited even further to catch these, and in most cases we were able to discover and ultimately exclude those that were under a jurisdiction simply for the fact of being a “transfer”. The agency that was actually providing the supervision was brought to the surface, and included.

Supervision includes both probation and supervised release³. The dataset was cleaned, and duplicates were eliminated. In order to retrieve recidivism information all offenders needed to have a State Identification Number (SID). If they did not have one they were eliminated from the dataset⁴. After a clean dataset was established, a file containing offender’ SIDs was sent to the Minnesota Bureau of Criminal Apprehension (BCA). Felony convictions that occurred after an offender’s supervision end date were used to determine the percentage of offenders who remained free of felony convictions within three years post-supervision.

It is important to note that while the best possible methods for obtaining this recidivism rate were employed for this study, we continue to find issues with the way these data are collected and maintained across the state; such as suspense files, missing SIDs, and different standards for maintaining data in different counties. The accuracy of the recidivism data will improve as Minnesota’s ability to identify offenders improves.

It is also important to realize that Minnesota’s recidivism rate is simply that – a rate. It does not indicate that probation or supervised release across Minnesota are or are not working. However, it does give the state a starting point for further exploration and understanding of how probation and supervised release function.

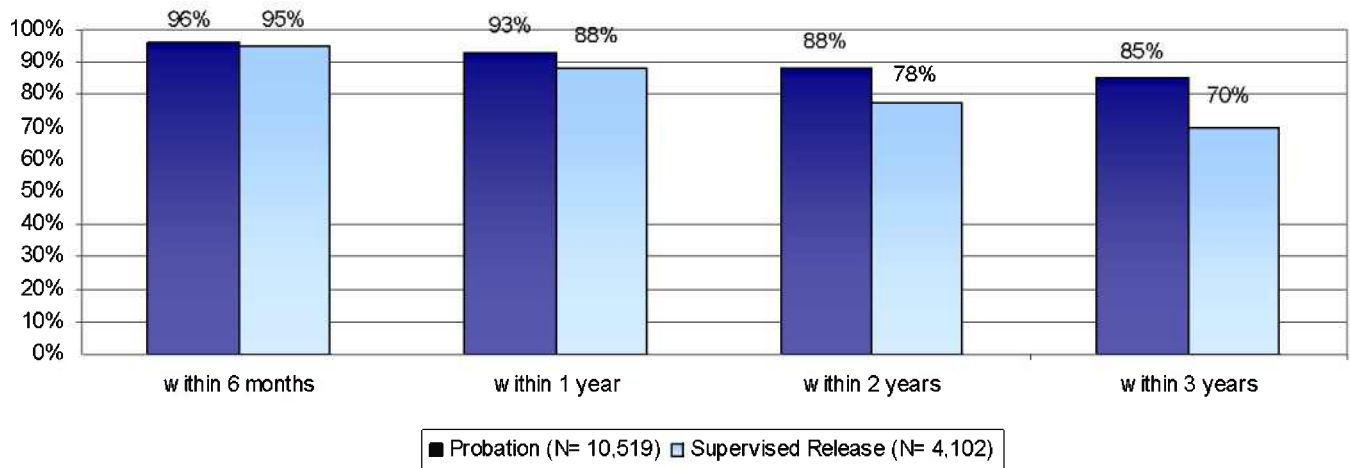
Re-conviction information in this report is cumulative; an offender’s first post-supervision felony reconviction was used to determine at what point he or she recidivated, resulting in a cumulative three year rate.

³ See page 37 for definitions of probation and supervised release.

⁴ Approximately 3.8% of the total offenders closed in 2005 did not have a State Identification Number and could not be used for this report. The expectation is that each year, the number of missing SIDs will decrease.

Findings-Recidivism

Percentage of Offenders with a Felony Case Closed in 2005 Who Remained Free of Felony Convictions within Three Years of Supervision End Date
(N= 14,621)



- Within three years post-supervision 85% of offenders on probation and 70% of offenders on supervised release were free from any additional felony-level convictions.
- It should be noted that previous recidivism studies have focused on supervised releasees directly after their release from prison. The population in this study focuses on the period after completion of *supervision*.

The offenders studied for this report were, on average, 33 years old at the end of probation supervision, and 34 years old at the end of supervised release supervision. In the probation cohort, 77% of the offenders were male, and 90% of those on supervised release were male. The racial composition of the offenders on probation and supervised release was slightly different; while 70% of the probation population was Caucasian, this was true for only 62% of those on supervised release. There were 21% of the probation population and 28% of the supervised release population that were African American.

Restitution

This report also includes statewide statistics on restitution. Restitution is defined as money the Court orders an offender to pay to a victim as part of a criminal sentence. This is an equitable remedy to restore a person to the position they would have been in if not for the improper action of the offender.

To obtain the population of offenders who have restitution ordered, the Statewide Supervision System⁵ was used to extract adults with a felony-level supervision case discharged in 2008. Supervision included probation and supervised release.

Number of Adult Felony Cases Closed in 2008 with Restitution Ordered	State-Wide Totals	% of Total Number of Cases Closed with Restitution Ordered
Total Number of Cases Closed with Restitution Ordered	2,292	100
Total Number Closed With Restitution Paid In Full	1,412	61.6 ⁶
Total Number Closed With Less Restitution Paid Than Ordered ⁵	880	38.3
Closed With Some Restitution Paid	305	13.3
Closed With \$0 Restitution Paid ⁷	575	25.0

⁵ Hennepin and Ramsey Counties compiled their statistics utilizing internal financial tracking software.

⁶ While a number of factors may have contributed to the decline in the number of offenders paying their restitution in full, the primary causes appear to have been the increase in unemployment as well as the increasing use of revenue recapture by probation agencies.

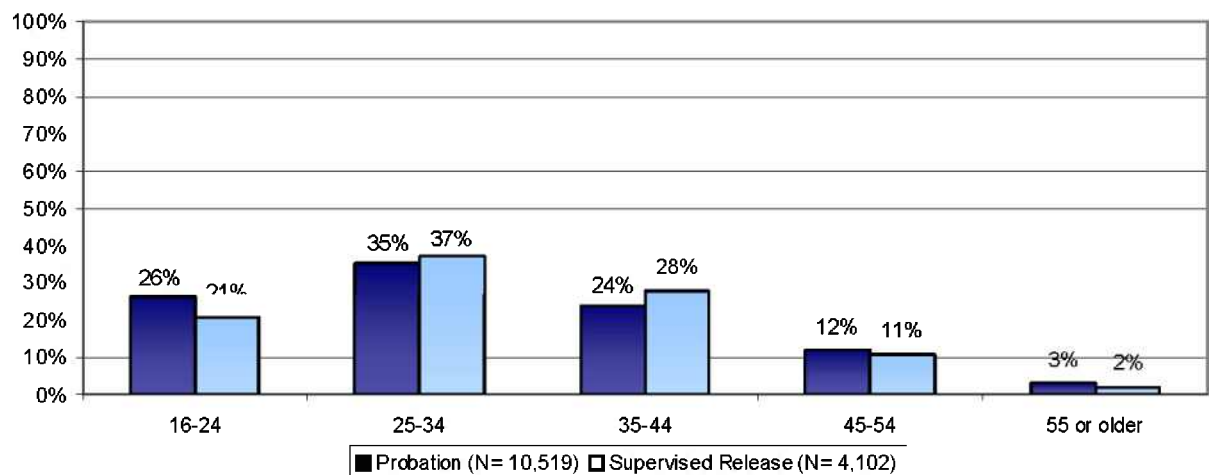
⁷ Completion amounts are as reported in S3 and do not include any subsequent payments via revenue recapture or other civil remedies.

Statewide Probation and Supervised Release Outcome Measures for Cases Closed in 2005

This section of the report presents demographic and recidivism information on 14,621 statewide offenders under supervision with a felony case that closed in 2005. Demographic information is presented first, followed by graphs showing the percentage of offenders who remained felony-free during the three years post-felony supervision.

FIGURE 1

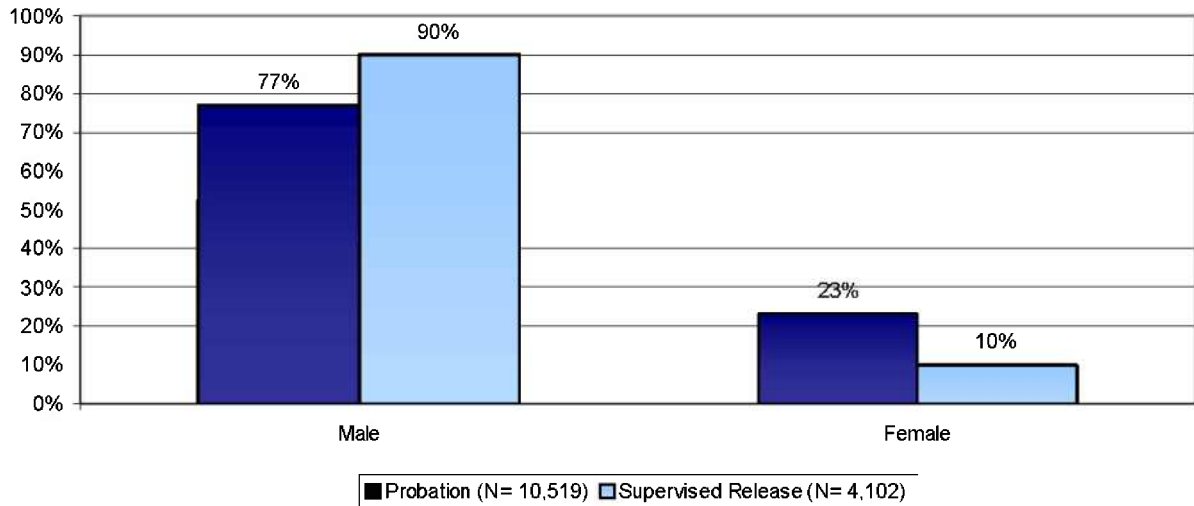
**Breakdown of Age for Felony Offenders Closed in 2005
(N= 14,621)**



- The age of offenders at their supervision end date varied slightly between those on probation and those on supervised release (Figure 1). The heaviest representation for both groups is the 25—34 age category with probationers making up 35% and supervised releasees making up 37%.
- The average age of statewide offenders on probation at the end of their supervision was 33 while the average age of offenders on supervised release was 34.

FIGURE 2

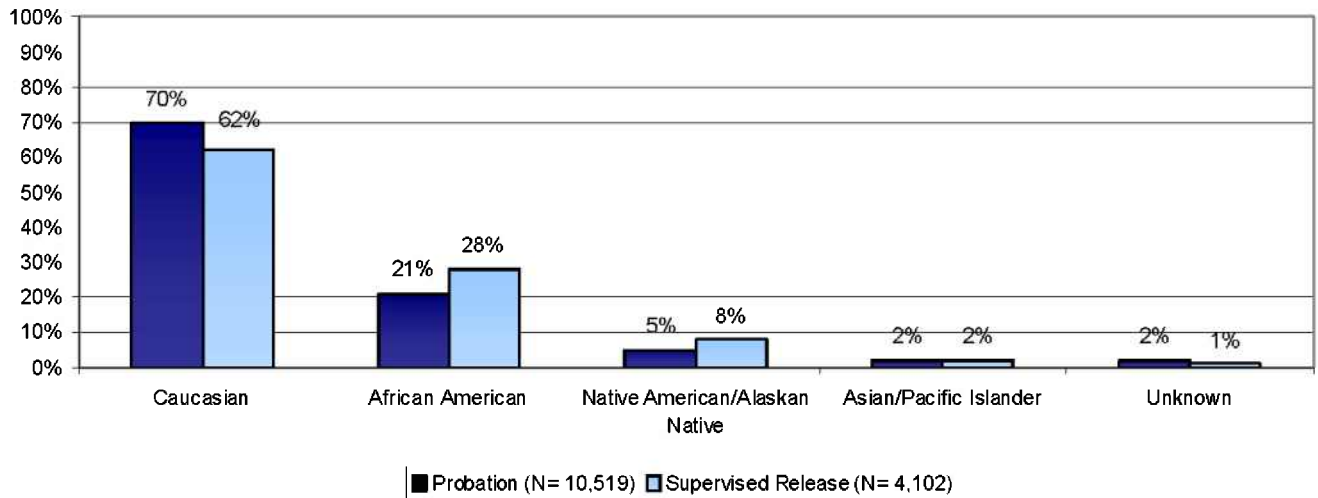
**Breakdown of Gender for Felony Offenders Closed in 2005
(N=14,621)**



- As shown in Figure 2, nearly eight in ten (77%) offenders on probation and nine in ten (90%) on supervised release were male.

FIGURE 3

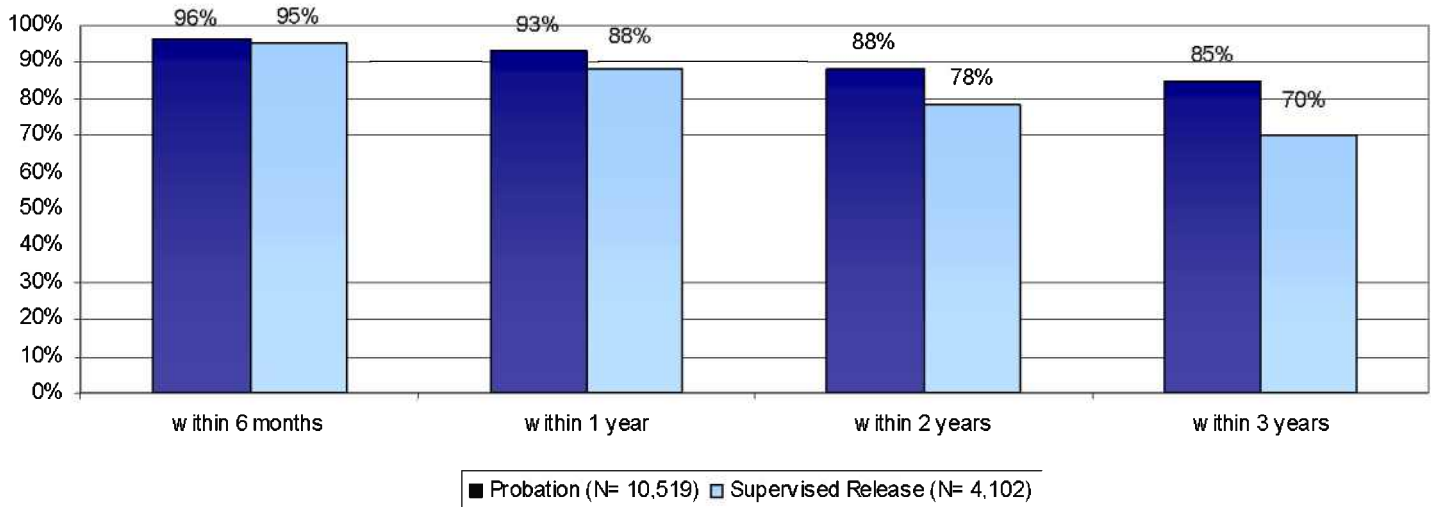
**Breakdown of Race for Felony Offenders Closed in 2005
(N=14,621)**



- In Figure 3, there are slight differences between the race of offenders on probation and those on supervised release. While 70% of the offenders on probation were Caucasian, 62% of those on supervised release were of this same race. In addition, 28% of offenders on supervised release and 21% of those on probation were African American.

FIGURE 4

**Percentage of Offenders with a Felony Case Closed in 2005 Who Remained Free of Felony Convictions within Three Years of Supervision End Date
(N= 14,621)**



- Figure 4 shows statewide felons with a closed case in 2005 who remained felony-free.
- The differences between probation and supervised release become more prominent at the two year mark where probationers are recidivism-free at 88% and supervised releases at 78%.

It is important to understand that the information in this graph is cumulative i.e., the pool of offenders who remain felony-free can only stay the same or grow smaller over time.

FIGURE 5

Five Year Comparison (2001–2005) of Percentage of Probationers with a Felony Case Closed Who Remained Free of Felony Convictions within Three Years of Supervision End Date

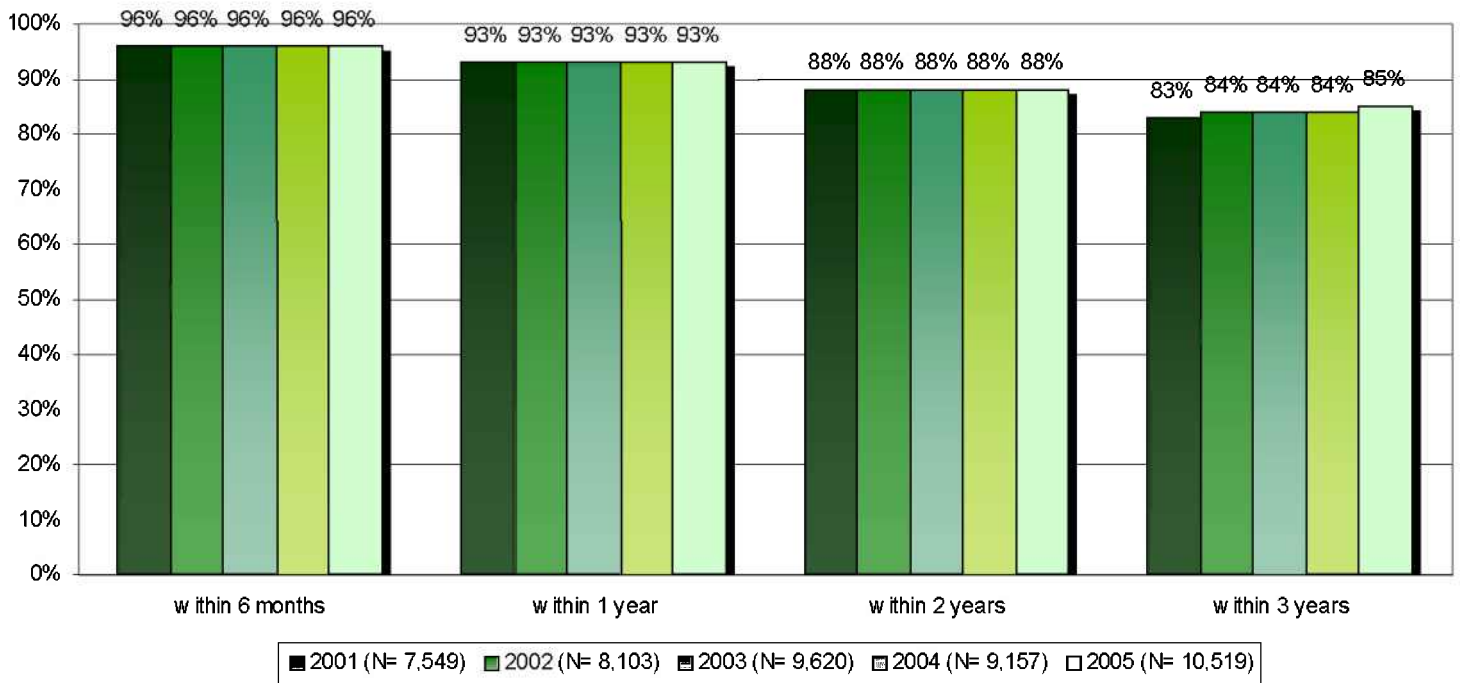
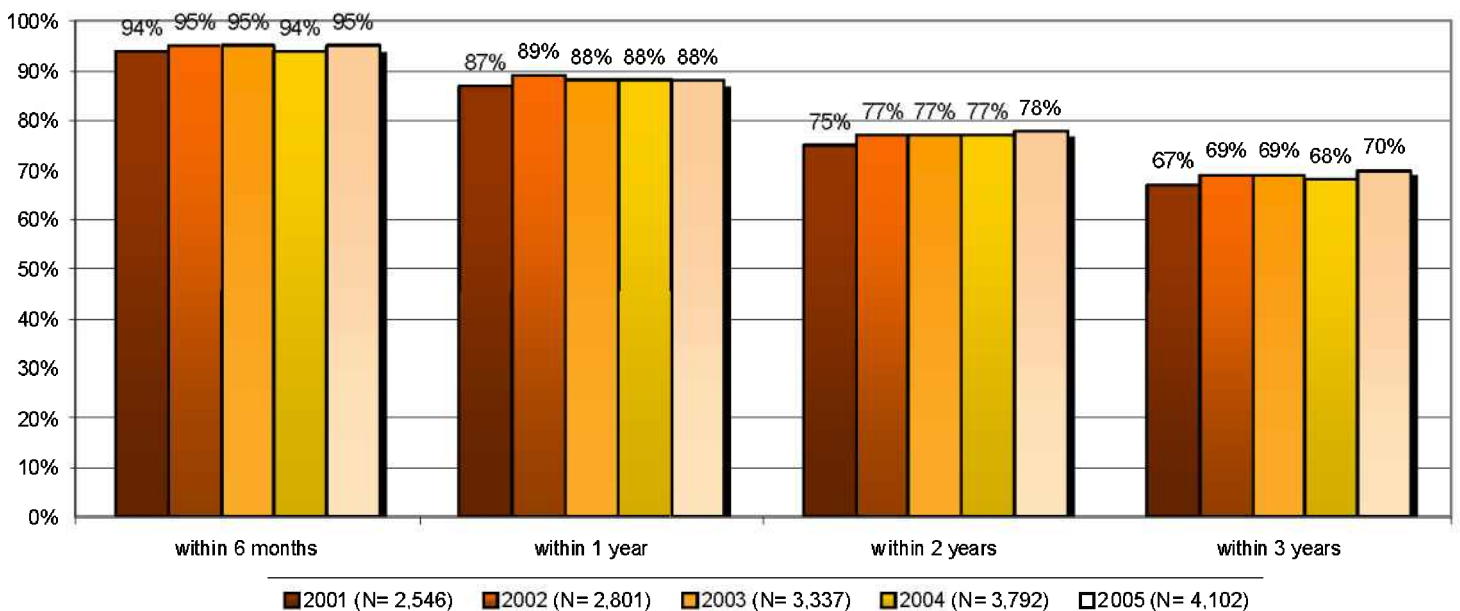


FIGURE 6

Five Year Comparison (2001–2005) of Percentage of Supervised Releasees with a Felony Case Closed Who Remained Free of Felony Convictions within Three Years of Supervision End Date

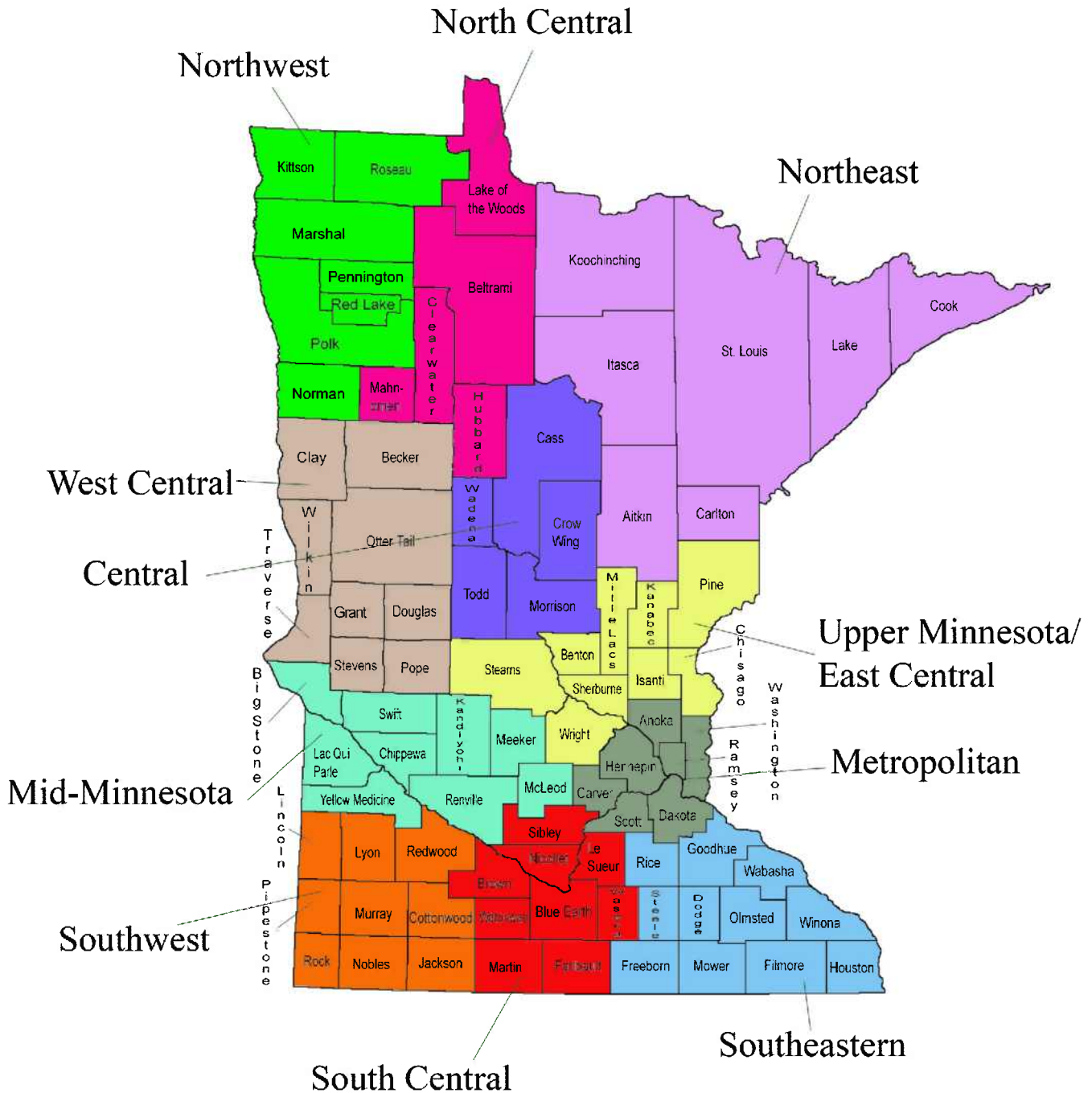


Regional Recidivism Analysis for Cases Closed in 2005

This section of the report examines recidivism based on regions across Minnesota. Regional aggregations are reported in a manner consistent with the Minnesota Regional Development Organizations. These regions include:

1. **Northwest.** Kittson, Marshall, Norman, Pennington, Polk, Red Lake, and Roseau.
2. **North Central.** Beltrami, Clearwater, Hubbard, Lake of the Woods, and Mahnomen.
3. **Northeast.** Aitkin, Carlton, Cook, Itasca, Koochiching, Lake, and St. Louis.
4. **West Central.** Becker, Clay, Douglas, Grant, Otter Tail, Pope, Stevens, Traverse, and Wilkin.
5. **Central.** Cass, Crow Wing, Morrison, Todd, and Wadena.
6. **Mid-Minnesota.** Big Stone, Chippewa, Kandiyohi, Lac Qui Parle, McLeod, Meeker, Renville, Swift, and Yellow Medicine.
7. **Upper Minnesota/East Central.** Benton, Chisago, Isanti, Kanabec, Mille Lacs, Pine, Sherburne, Stearns, and Wright.
8. **Southwest.** Cottonwood, Jackson, Lincoln, Lyon, Murray, Pipestone, Redwood, Rock, and Nobles.
9. **South Central.** Blue Earth, Brown, Faribault, Le Sueur, Martin, Nicollet, Sibley, Waseca, and Watonwan.
10. **Southeast.** Dodge, Fillmore, Freeborn, Goodhue, Houston, Mower, Olmsted, Rice, Steele, Wabasha, and Winona.
11. **Metropolitan.** Anoka, Carver, Dakota, Hennepin, Ramsey, Scott and Washington.

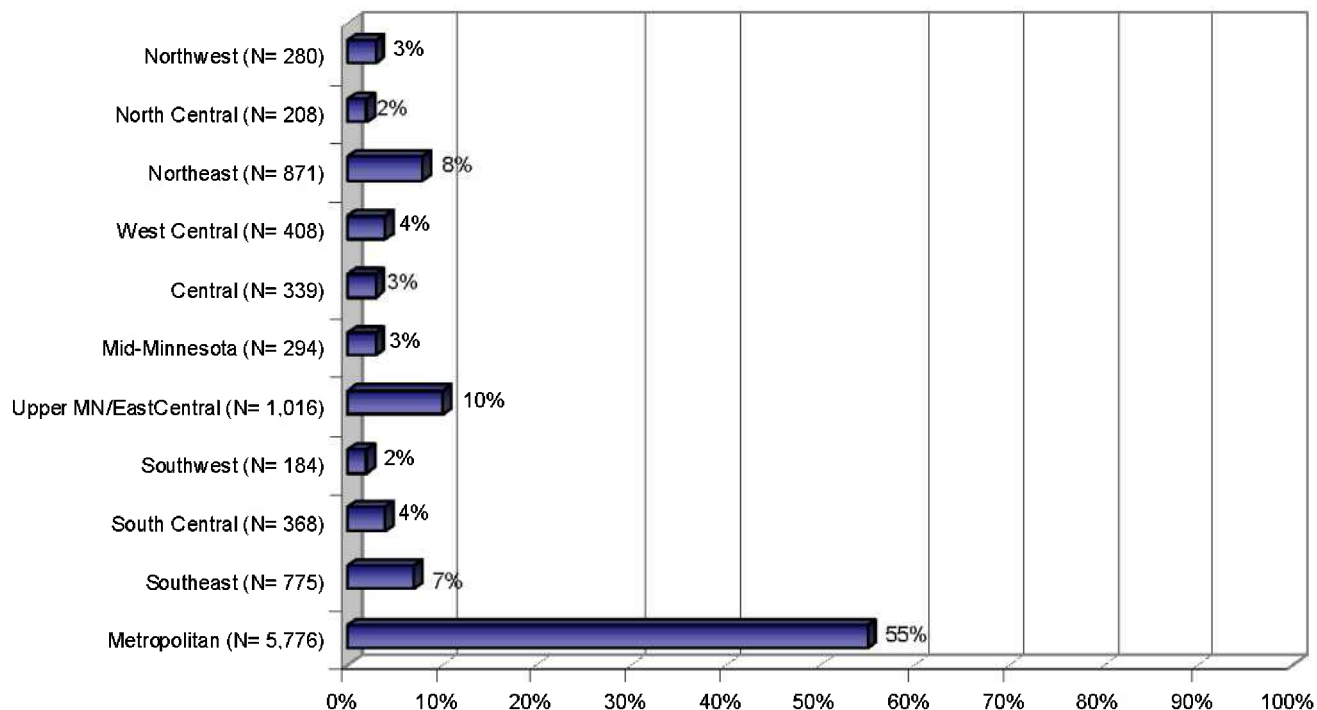
Regional Map



Probation Regional Recidivism

FIGURE 7

2005 Probation Population Distribution by Region
(N= 10,519)

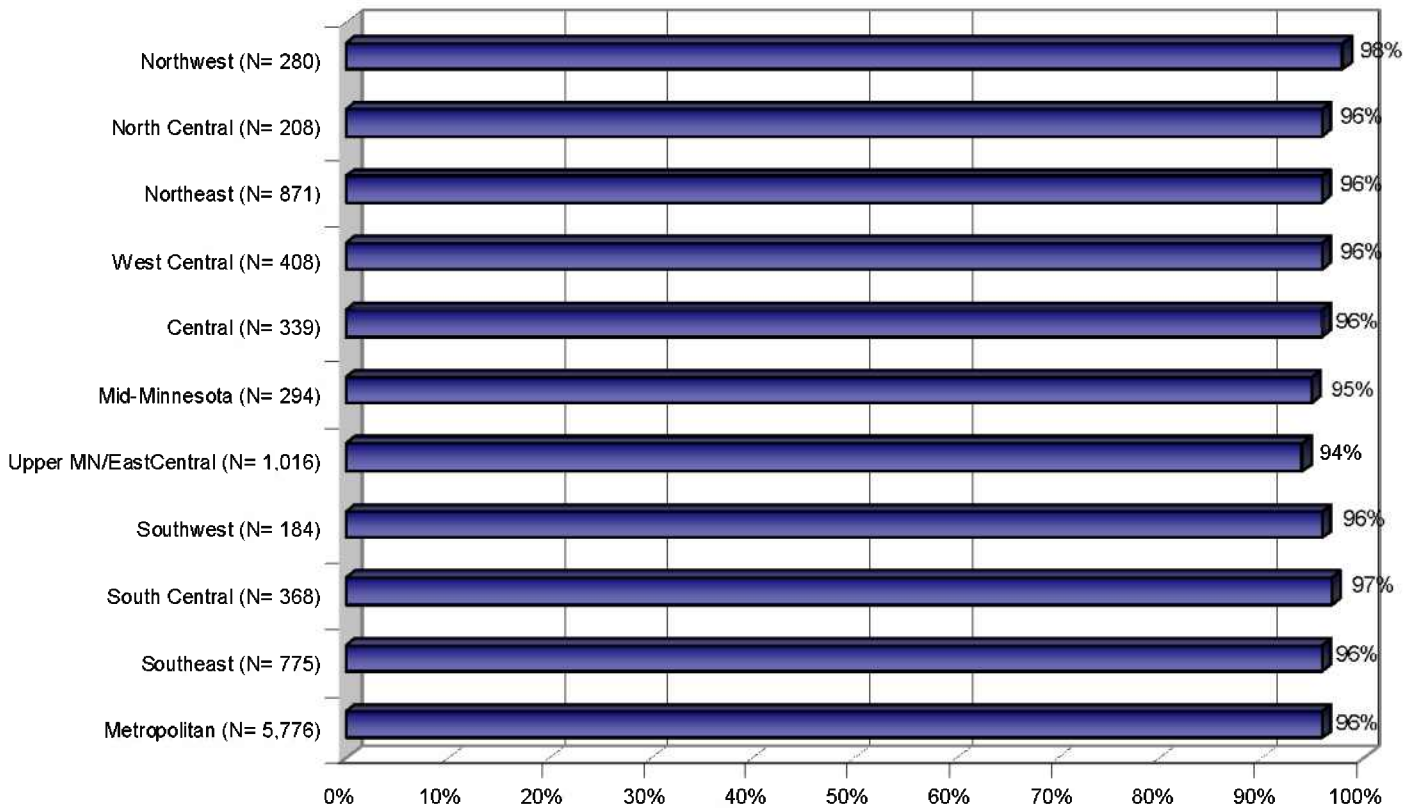


- The largest distribution of offenders in the probation population was 55% under supervision in the Metropolitan region⁸.
- All other regions represented 10% or less of the population (Figure 7).

⁸ Please refer to page 13 for the regional breakdown.

FIGURE 8

**Six Months Felony-Free by Region for Probationers with a Felony Case Closed in 2005
(N= 10,519)**

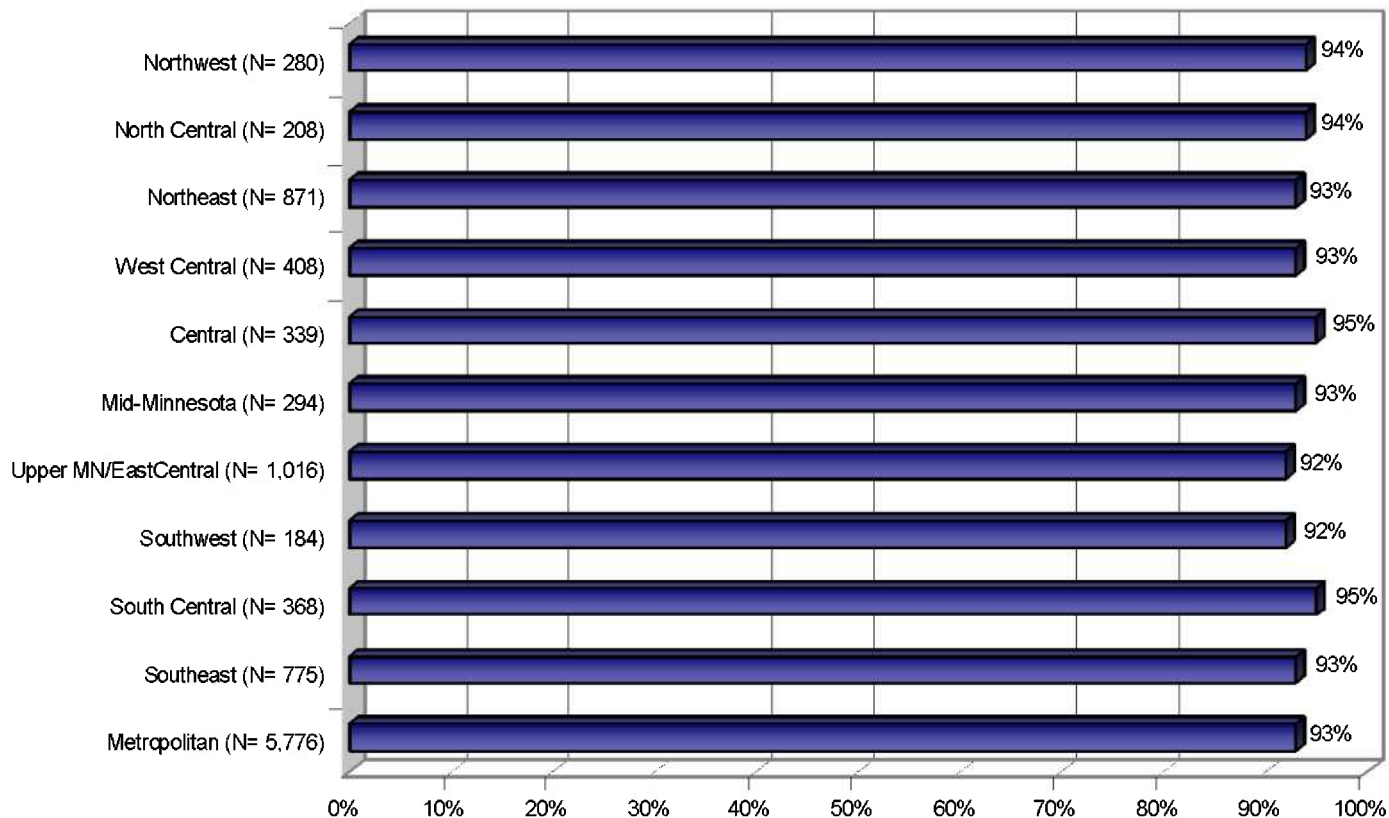


- Figure 8 shows that offenders on probation at six months post-supervision, had felony conviction free rates between 94% and 98%.
- Felony-free conviction rates were highest in the Northwest⁹ and South Central regions.

⁹ Please refer to page 13 for the regional breakdown.

FIGURE 9

**One Year Felony-Free by Region for Probationers with a Felony Case Closed in 2005
(N= 10,519)**

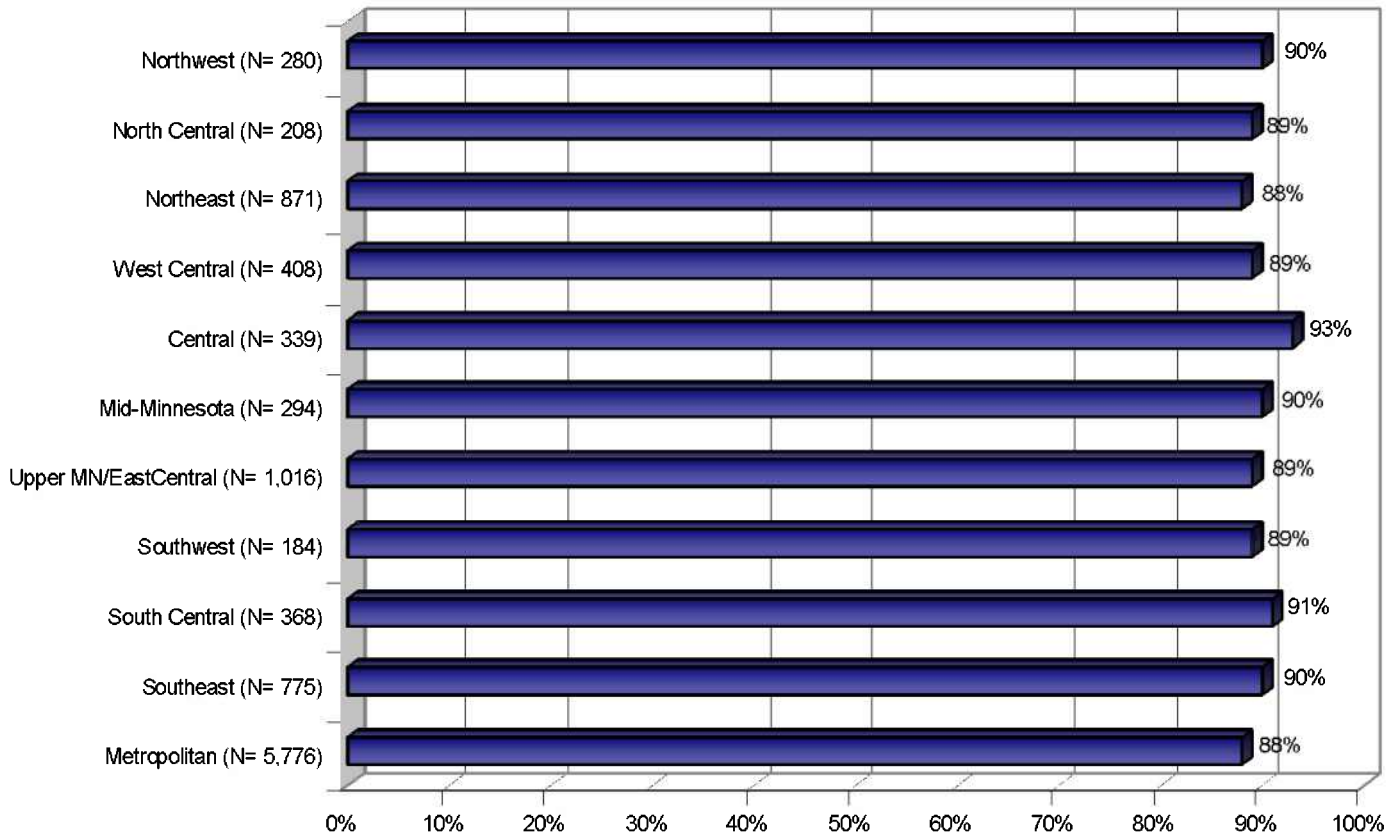


- By one year post-supervision, between 92% and 95% of offenders that were on probation in the various regions were felony conviction free (Figure 9).
- The Central¹⁰ and South Central regions had the highest felony-free conviction rates and the Upper Minnesota/East Central and Southwest regions had the lowest.

¹⁰ Please refer to page 13 for the regional breakdown.

FIGURE 10

**Two Years Felony-Free by Region for Probationers with a Felony Case Closed in 2005
(N= 10,519)**

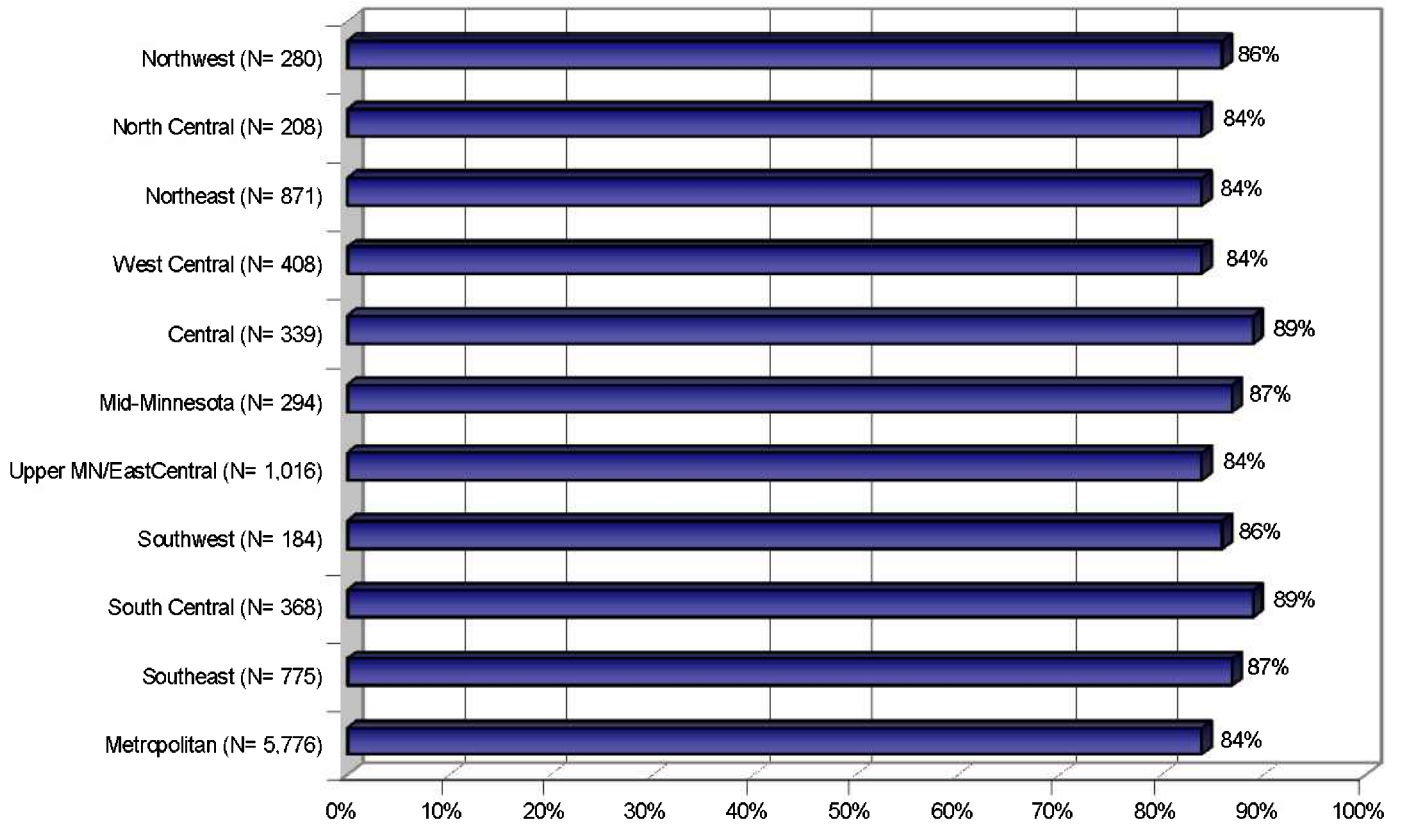


- At two years post-supervision between 88% and 93% of felony-level offenders that were on probation remained felony conviction free (Figure 10).
- Central¹¹ region had the highest rate at 93%.

¹¹ Please refer to page 13 for the regional breakdown.

FIGURE 11

**Three Years Felony-Free by Region for Probationers
with a Felony Case Closed in 2005
(N= 10,519)**



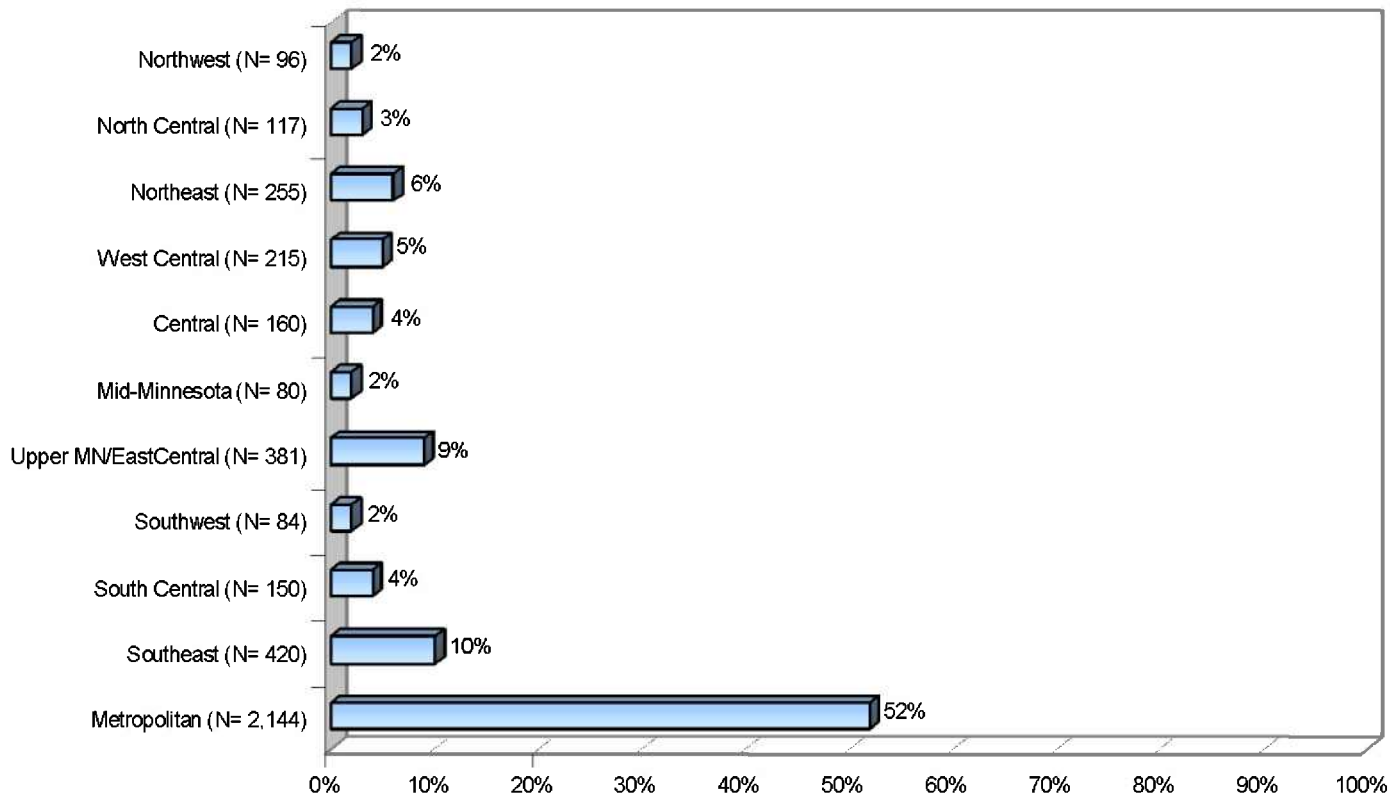
- Within three years post-supervision between 84% and 89% of felony-level offenders that were on probation remained felony conviction free (Figure 11).
- The Central¹² and South Central regions represented the highest felony-free conviction rates.

¹² Please refer to page 13 for the regional breakdown.

Supervised Release¹³ Regional Recidivism

FIGURE 12

2005 Supervised Release Population Distribution by Region
(N= 4,102)



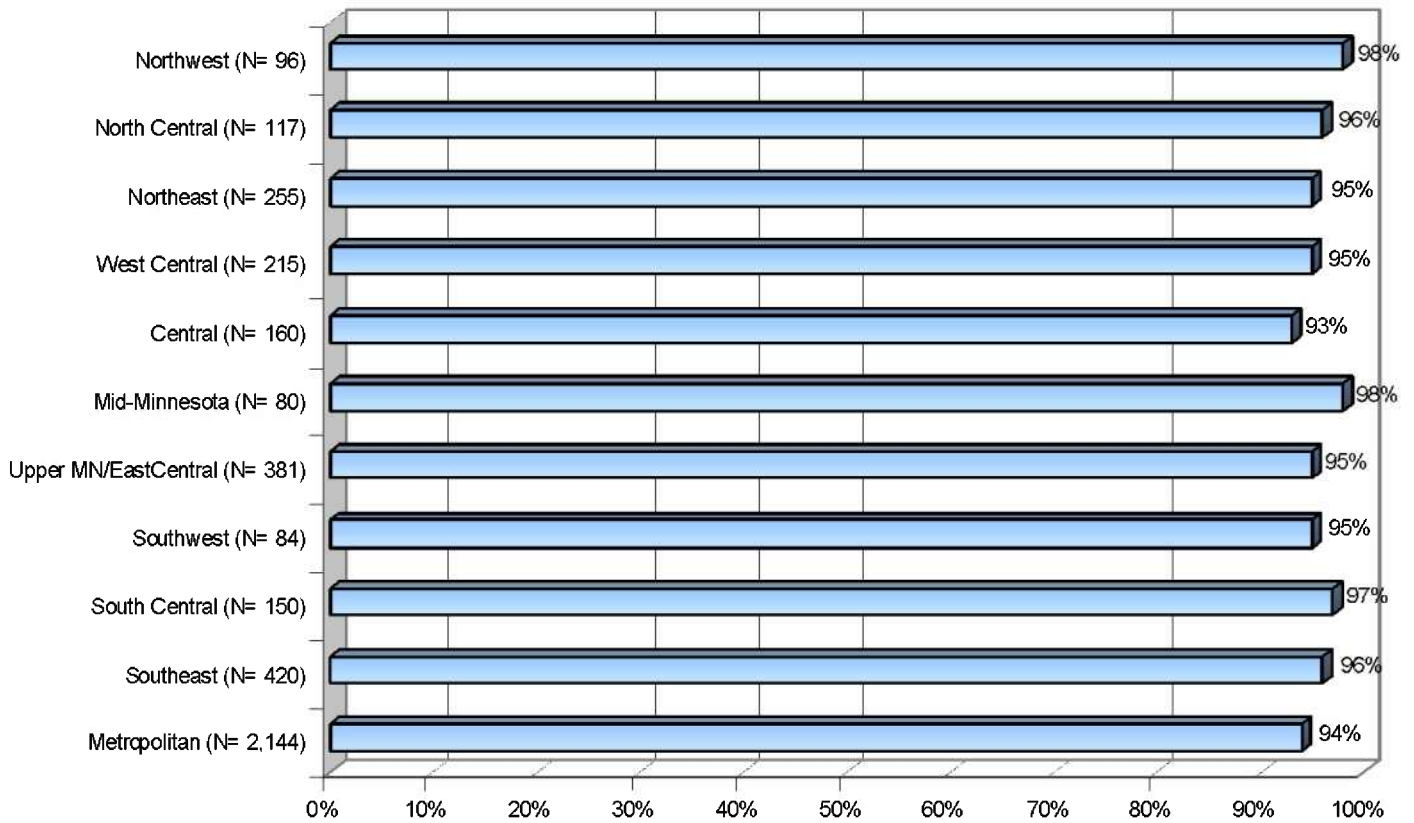
- The largest distribution of the felony-level supervised release population was in the Metropolitan region¹⁴ (52%).
- All other regions represented 10% or less of the population (Figure 12).

¹³ It should be noted that previous recidivism studies have focused on supervised releasees directly after their release from prison. The population in this study focuses on the period after completion of *supervision*.

¹⁴ Please refer to page 13 for the regional breakdown.

FIGURE 13

**Six Months Felony-Free by Region for Supervised Releasees
with a Felony Case Closed in 2005
(N= 4,102)**

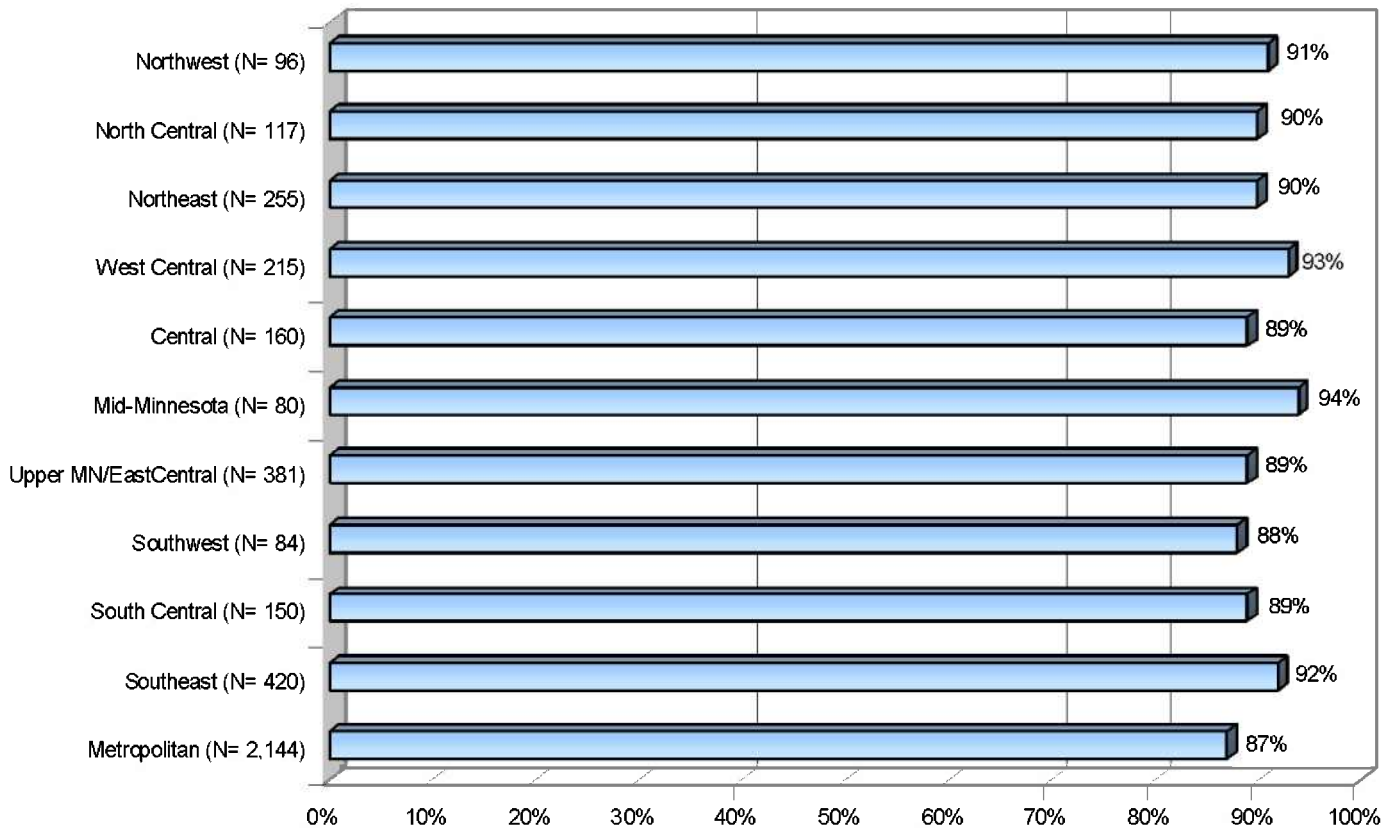


- Figure 13 shows that for offenders on supervised release at six months post-supervision, between 93% and 98% were felony conviction free.
- The Northwest¹⁵ and Mid-Minnesota regions had the highest rates of all the regions with 98% felony conviction free.

¹⁵ Please refer to page 13 for the regional breakdown.

FIGURE 14

**One Year Felony-Free by Region for Supervised Releasees
with a Felony Case Closed in 2005
(N= 4,102)**

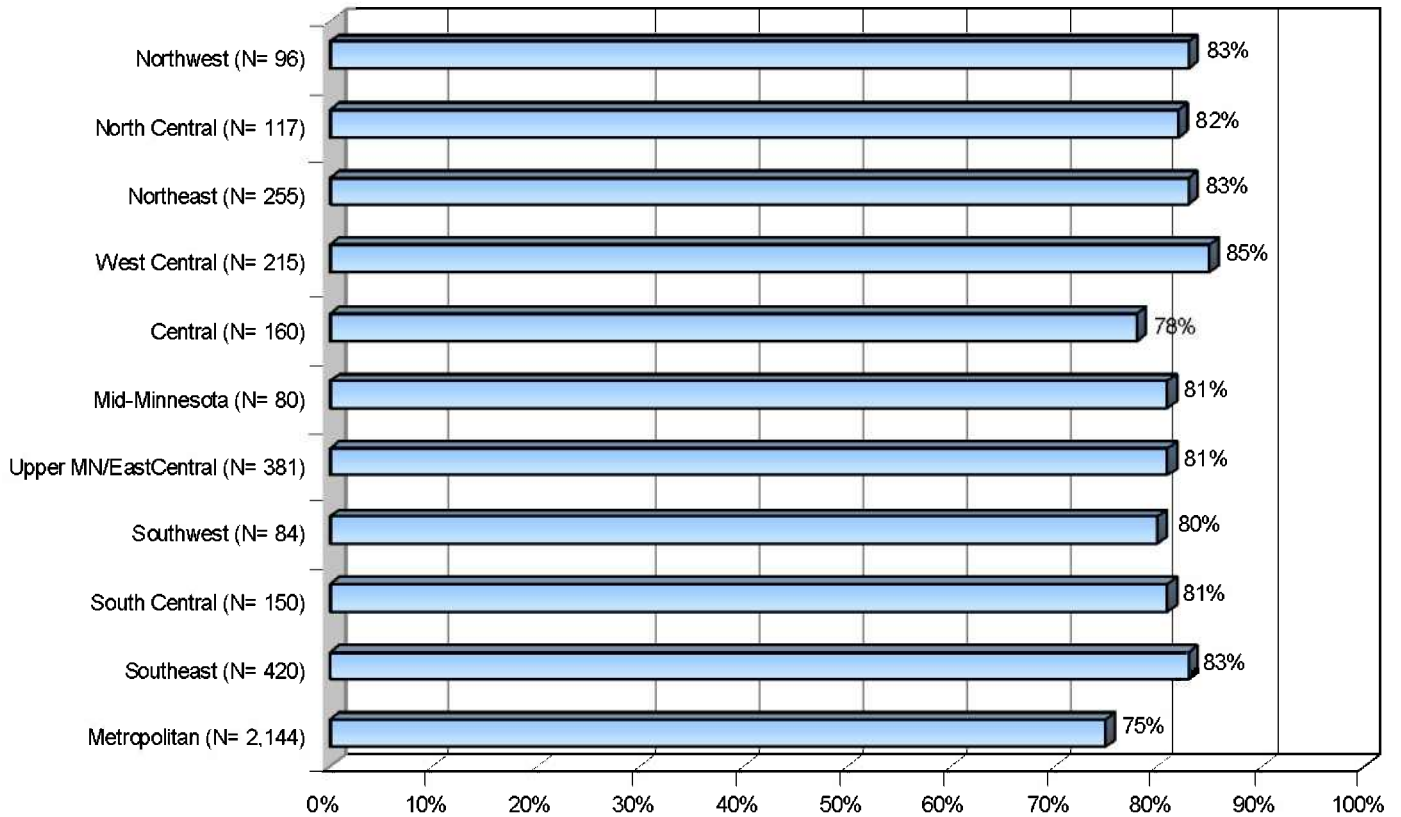


- By one year post-supervision, between 87% and 94% of offenders that had been on supervised release in the various regions were felony conviction free (Figure 14).
- The Mid-Minnesota¹⁶ region marked the highest rate of felony conviction free at 94% and the Metropolitan region was the lowest with 87%.

¹⁶ Please refer to page 13 for the regional breakdown.

FIGURE 15

**Two Years Felony-Free by Region for Supervised Releases
with a Felony Case Closed in 2005
(N= 4,102)**

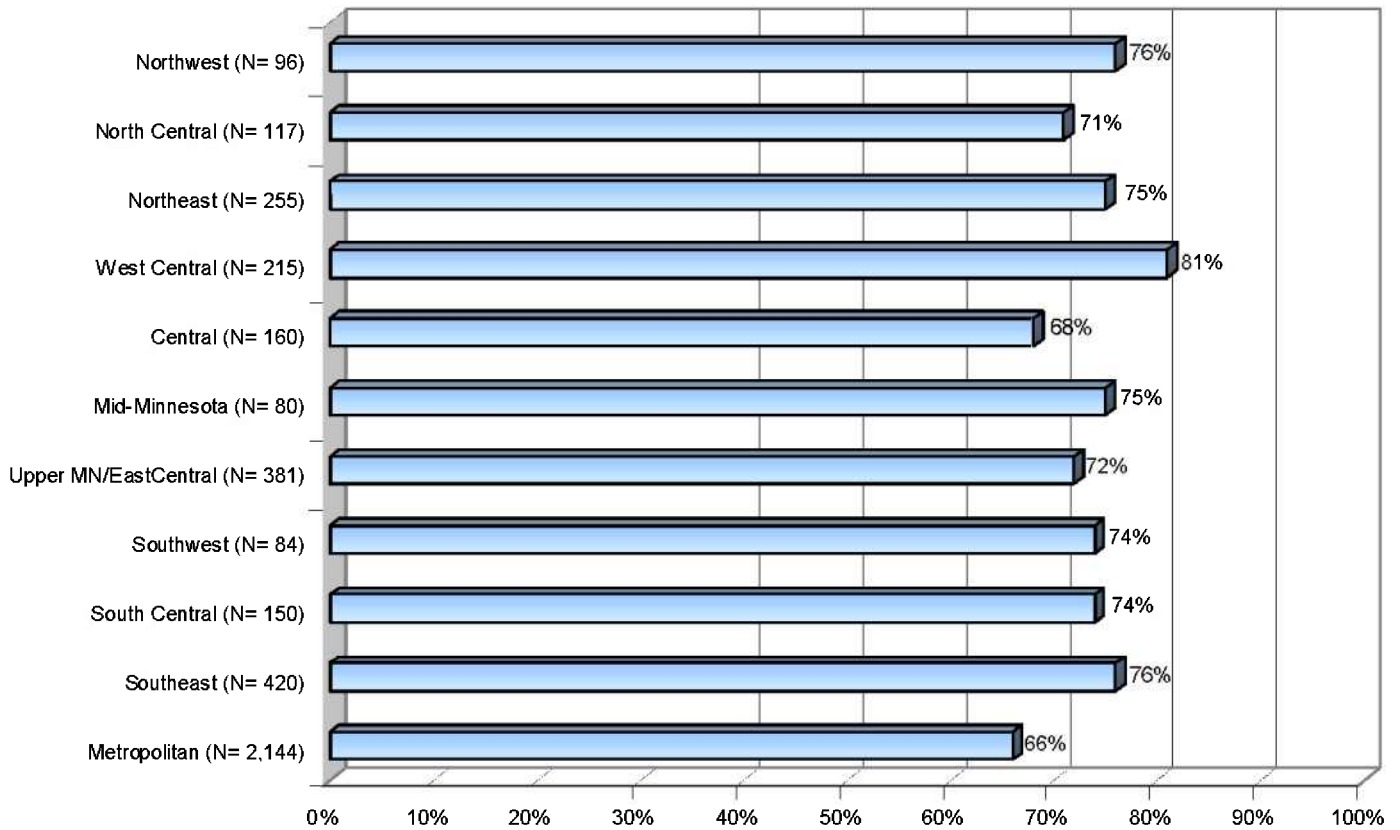


- At two years post-supervision between 75% and 85% of felony-level offenders that had been on supervised release remained felony conviction free (Figure 15).
- West Central¹⁷ had the highest rate at 85% and the Metropolitan region was the lowest at 75%.

¹⁷ Please refer to page 13 for the regional breakdown.

FIGURE 16

**Three Years Felony-Free by Region for Supervised Releasees
with a Felony Case Closed in 2005
(N= 4,102)**



- Within three years post-supervision between 66% and 81% of felony-level offenders that were on supervised release remained felony conviction free (Figure 16).
- The West Central¹⁸ region had the highest and the Metropolitan region again had the lowest felony conviction free rates.

¹⁸ Please refer to page 13 for the regional breakdown.

